

A painting of the RMS Titanic sailing on a dark, choppy sea under a dramatic, orange-hued sky. The ship is shown from a side-on perspective, moving towards the right. Its four iconic funnels, with black tops and red-brown bodies, are prominent, with smoke rising from the first three. The ship's hull is dark blue-grey, and the name 'TITANIC' is visible on the bow. The overall mood is somber and historical.

Titanic SESE project

By Grace Cassidy
and
Aisling Shevlin

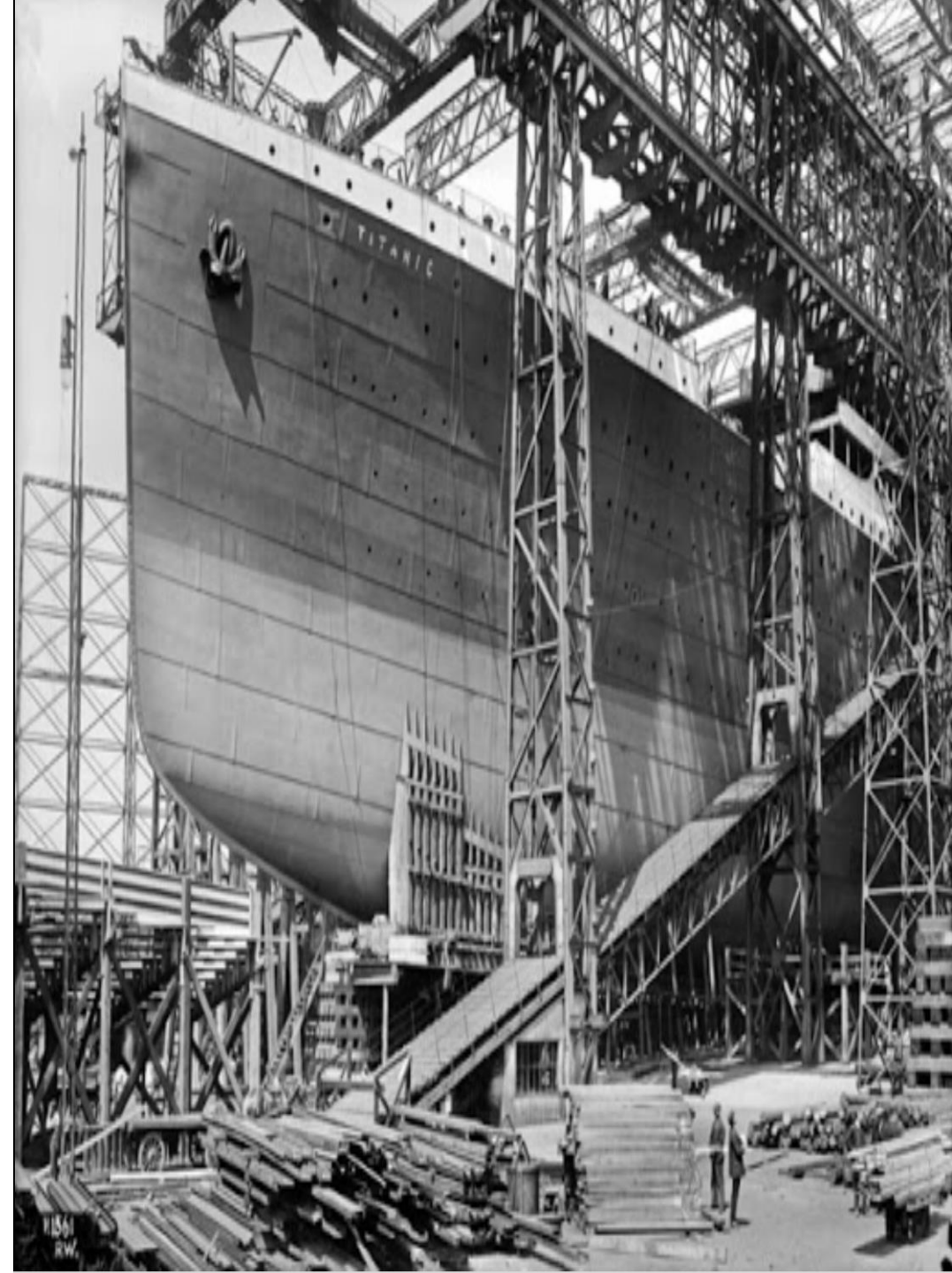
A detailed painting of the RMS Titanic sailing on the ocean. The ship is dark blue with a red hull, and its four funnels are black with gold bands. The name 'TITANIC' is visible on the bow. The ship is surrounded by white-capped waves under a dramatic, cloudy sky. A semi-transparent white circle is overlaid on the left side of the image, containing the title and a list of contents.

Table of Contents

- Construction
- Design
- Life on Board
- The Sinking
- Famous Passengers
- Location
- Millvina Dean
- Fascinating Facts

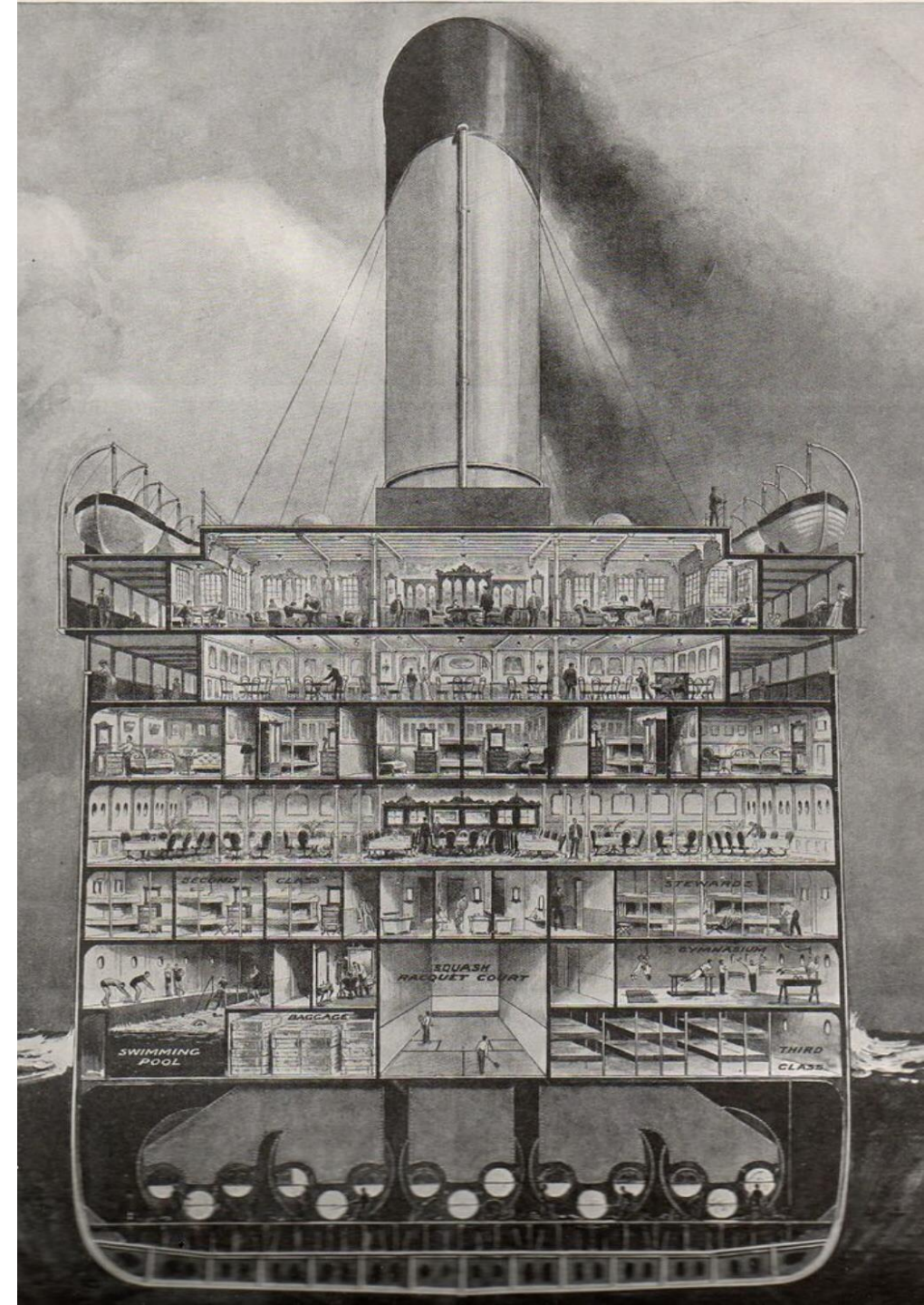
Construction

- Construction on the RMS Titanic started on March 31st 1909.
- RMS stands for Royal Mail Steamer or Royal Merchant Ship, as it also carried mail.
- The Titanic was built in a dry dock in Belfast. This is an enclosed dock with all of the water taken out so that workers can easily move around the outside of the ship.
- It was built at an estimated cost of €7.5 million, it would be €400 million to construct it again.
- Building the Titanic did not go without problems.
- 3,000 people built the Titanic.
- They completed the Titanic on the 2nd April 1912.



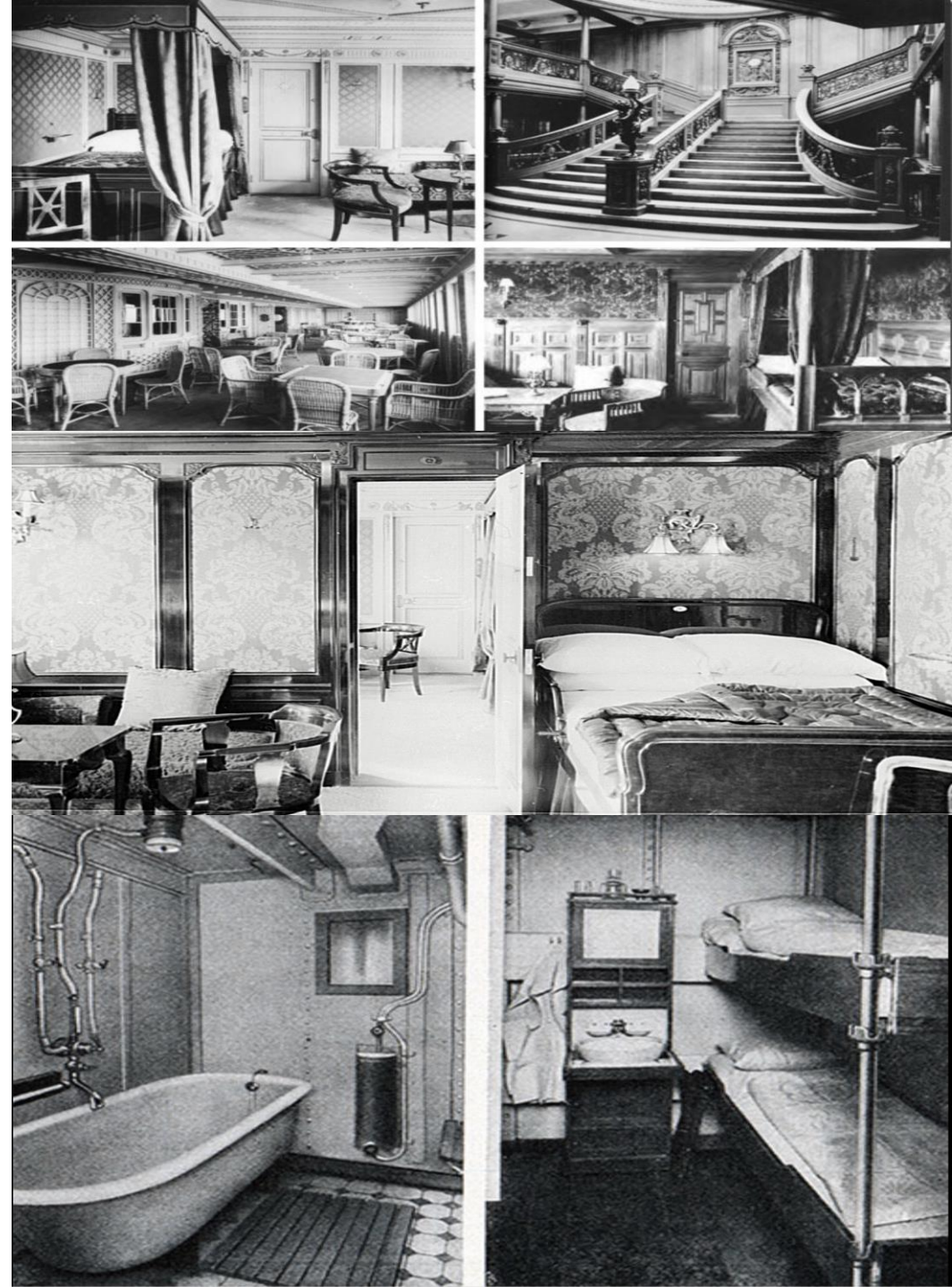
Design

- The designer of the titanic was a Mr Thomas Andrews, he was a naval architect who worked with the shipbuilding firm Harland and Wolf.
- He was born on the 7th of February 1873, near Belfast, Northern Ireland.
- He died while on the titanic when it went down on April 15th 1912.
- It took about 26 months to design the titanic.
- They designed the titanic in Belfast.
- They started building it in March 31st
- They finished it in April 1912.



Life on Board

- First class on board the titanic was luxury. There was cafes, a smoking room, restaurant, a dining saloon and a reading and writing room. The first-class passengers could play deck games, such as shuffleboard, and use the gym, squash courts and the swimming pool onboard.
- Second class passengers on the titanic had cabins with bunk beds. Passengers in second class had facilities such as a spacious outdoor promenade, a smoking room, a library and a dining room. They could play deck games such as shuffleboard and ring toss and board games, like chess.
- Third class passengers on the titanic had running water and electricity. They were provided with hot meals. On most other ships third class passengers were expected to bring their own food that would last the entire journey.



The Sinking

- The titanic sank in the early morning hours of 15th of April 1912 in the North Atlantic Ocean, four days into the ships voyage from Southampton to New York City.
- The titanic which had carried 2,200 passengers and crew, had struck an iceberg, about 400 miles south of Newfound Land, Canada.
- When the titanic sank it killed about 1,500 passengers.
- The titanic had 16 watertight compartments, and the ship could stay afloat with up to four of these compartments flooded. After hitting the iceberg, water began flooding the titanic forward six compartments. Bulkhead watertights walls in the compartments meant to keep water from flooding the rest of the ship, were not tall to contain the water in the damaged compartments. In just over two and a half hours, the titanic filled with water and sank.

