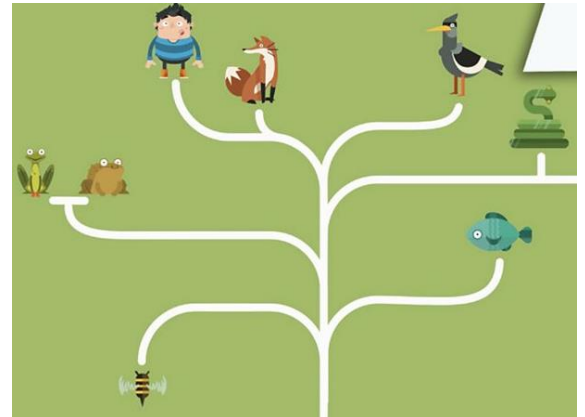


Learning about Classification in the Animal Kingdom

Animal groups

Animals can be divided into groups or '**classified**' by looking at the **similarities** and **differences** between them.



Animals are divided into two main groups.

1. Animals that have a **backbone** are called **vertebrates**.
2. Animals that do not have a **backbone** are called **invertebrates**.

Vertebrates and invertebrates are divided into smaller groups.

1. **Vertebrates** have backbones and an inner skeleton and are divided into **mammals, fish, amphibians, reptiles, and birds**.



2. **Invertebrates** do not have backbones or skeletons and have soft bodies such as jellyfish, worms and molluscs (like slugs and squids). There are also groups of invertebrates with hard bodies, such as insects, crustaceans (like crabs) and spiders. - They have an outer hard skeleton.

